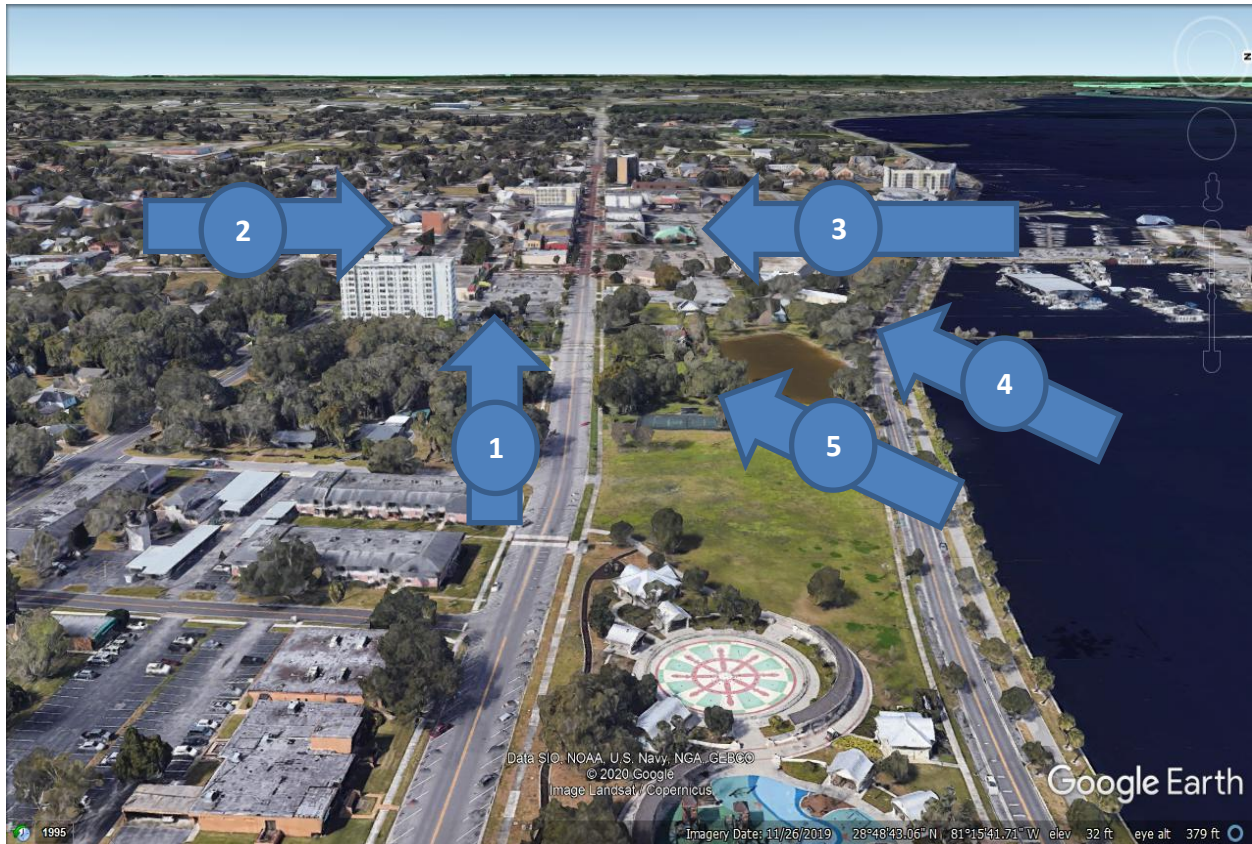


Sanford FL East 1st Street Community Venues.



In Downtown Sanford, between the lakefront park and downtown’s main street “active zone” is the Post Office [1], the community theater [2], the public library [3], the community center [4] and the local history museum [5]; all with ample sidewalks, on-street parking and proximity to restaurants. From the library [with the green roof] at the east end of the main street “active zone” to the waterpark is less than a quarter mile. Immediately to the south of the park are high rise apartments for the elderly. A great walking district for the old, the young, visitors and people of all ages.